

## POP3 email settings

These are the advanced settings for users that want to set up a POP3 email account using Outlook.

---

**Note:** Incoming server is **pop.homestead.com** and the outgoing server is **smtp.homestead.com**.

---

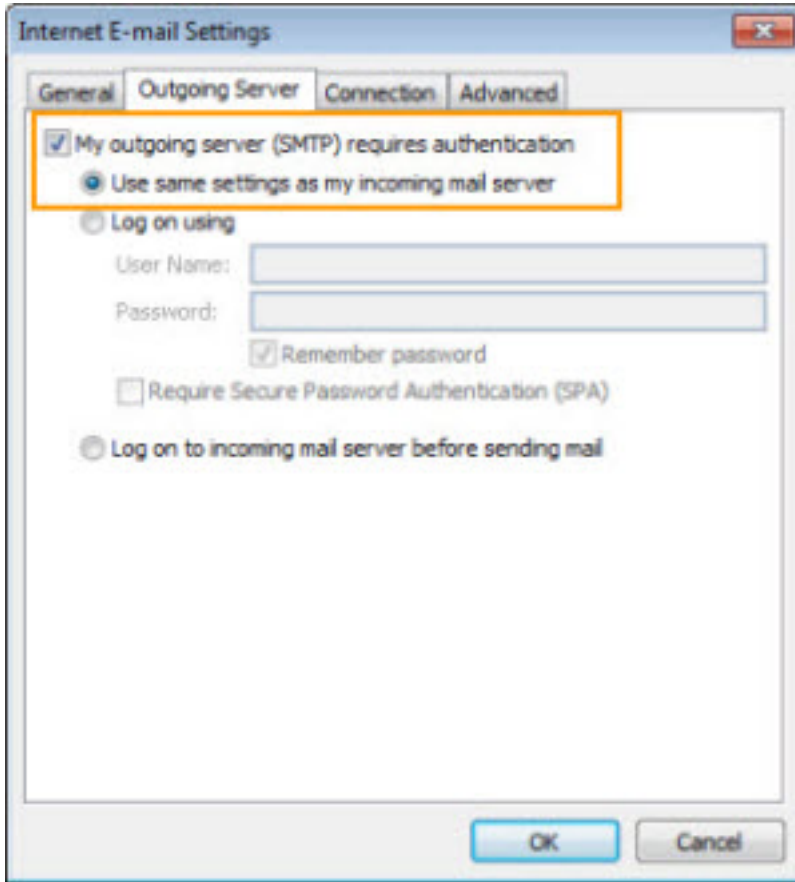
---

**Note:** POP3 accounts are **not recommended** for customers that want to check email from multiple sources (home computer, work computer, mobile phone)

---

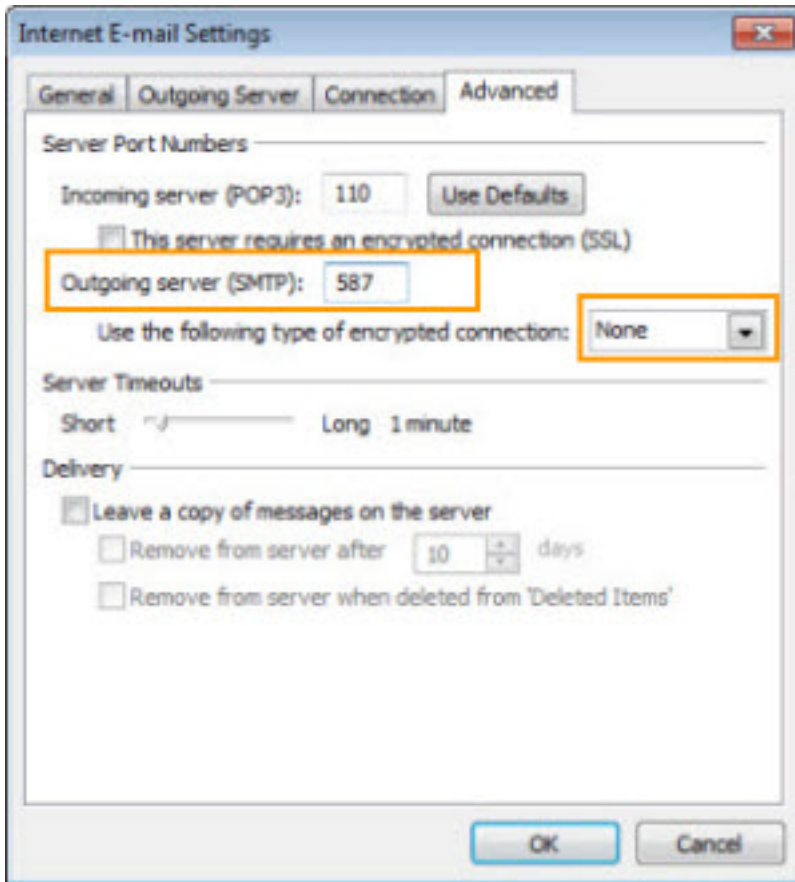
**For POP3, confirm the advanced settings by following the steps below:**

1. Click **More Settings**.
2. Click the **Outgoing Server** tab.
3. Check the **My outgoing server (SMTP) requires authentication** checkbox. Select **Use same settings as my incoming mail server**.



**Important:** If you don't complete this step, you'll get the error message **550 #5.1.0 Address reject**.

4. Click the **Advanced** tab. You will see Server Port Numbers.



- The port number for **Incoming Server** must be **110**.
  - Clear the **server requires an encrypted connection (SSL)** checkbox.
  - Set the Outgoing Server Port Number to **587**.
  - Use the following type of encrypted connection: **None** and click **OK**.
5. Click **Next** and then click **Finish**.
  6. Click **Close** to complete the set up.

**Note:** To test the settings, send a message directly from Outlook.